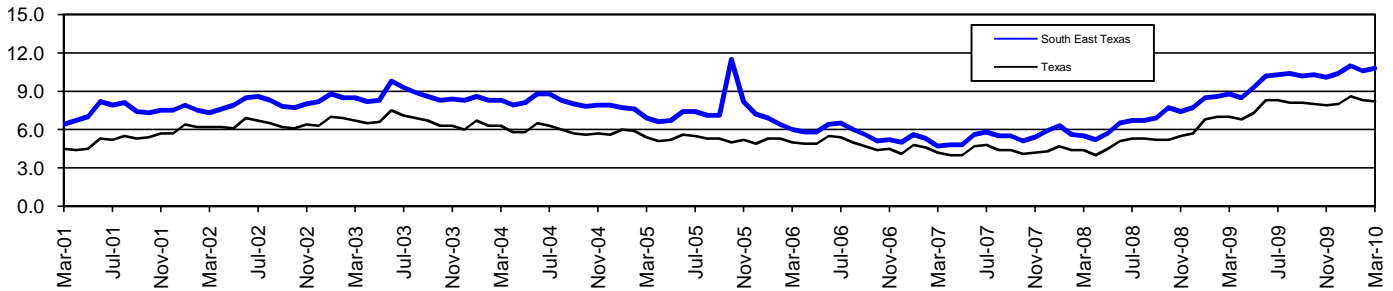


South East Texas Workforce Development Area*

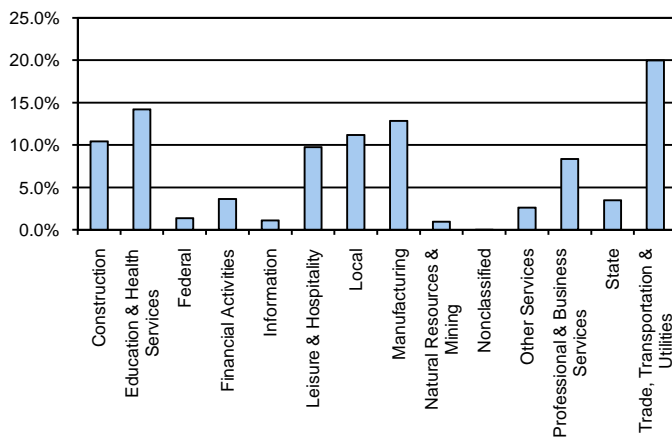
March 2010

South East Texas WDA					Texas				
	CLF	Employed	Unemployed	Rate		CLF	Employed	Unemployed	Rate
Mar-10	186,259	166,100	20,159	10.8	Mar-10	12,123,132	11,127,887	995,245	8.2
Feb-10	185,627	165,882	19,745	10.6	Feb-10	12,092,207	11,085,459	1,006,748	8.3
Mar-09	184,636	168,347	16,289	8.8	Mar-09	11,776,835	10,948,054	828,781	7.0

Historical Unemployment Rates



South East Texas WDA Industry Composition 3rd Quarter 2009



Total WDA Claims

	Mar-10	Feb-10	Mar-09	OTY
Initial	2,696	2,130	2,724	-28
Continued	13,173	11,471	15,465	-2,292
Continued Claims for the Week of the 12th				
Continued	864	972	1,036	-172

Texas Unemployment Insurance Claims Filed

	Mar-10	Feb-10	Mar-09	OTY
Initial	98,362	86,282	132,553	-34,191
Continued	1,088,926	1,020,691	1,242,793	-153,867
Continued Claims for the Week of the 12th				
Continued	233,413	243,367	255,582	-22,169

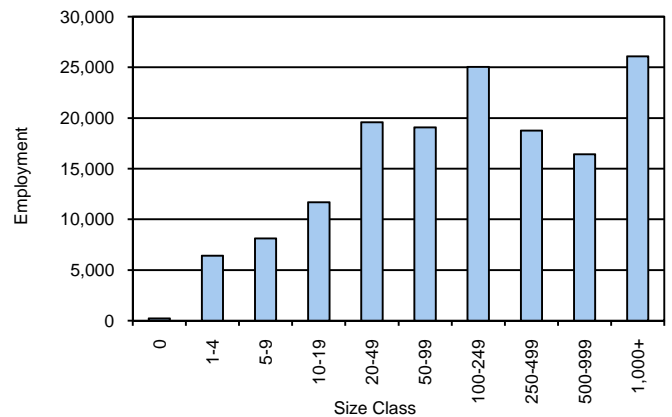
South East Texas WDA Average Weekly Wage

	South East Tx	WDA Qtr. Chg.	Texas
3rd Quarter 2009	\$810.56	\$16.38	\$844.59
2nd Quarter 2009	\$794.18	WDA OTY Chg.	\$838.34
3rd Quarter 2008	\$796.90	\$13.66	\$849.50

NAICS Covered Employment Quarterly Data 3rd Quarter 2009

SUPER SECTOR	Employment	Change	
		Quarter	Year
Construction	15,775	-196	-3,019
Education & Health Services	21,496	147	496
Federal	2,090	-66	-43
Financial Activities	5,527	-57	-170
Information	1,698	-48	-262
Leisure & Hospitality	14,789	-342	225
Local	16,936	-1,269	839
Manufacturing	19,449	-769	-3,525
Natural Resources & Mining	1,476	-41	-231
Nonclassified	21	-35	-18
Other Services	3,990	-128	-137
Professional & Business Services	12,650	-828	-2,867
State	5,255	-230	251
Trade, Transportation & Utilities	30,269	-75	-527
TOTAL	151,421	-3,937	-8,988

Size Class Employment Composition 3rd Quarter 2009



*Counties in WDA: Hardin, Jefferson, & Orange

Available at <http://www.tracer2.com/>